



**FIRST ALERT**



**HURRICANE GUIDE**

**2020**

*The Suncoast's Most Accurate Forecast*



Presented By:



**FIRST ALERT  
WEATHER**



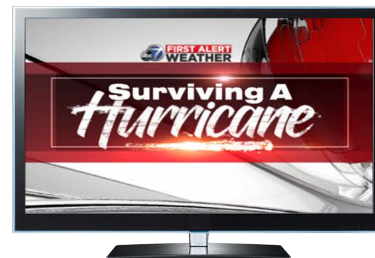
This will be my 35th year covering hurricanes here at ABC7. In over 3 decades of coverage, three storms have had a huge impact on at least some parts of the Suncoast.

Tropical storm Gabrielle in 2001, major cat. 4 hurricane Charley in 2004 and more recently hurricane Irma in 2017. All 3 of these storms have one thing in common. They hit the Suncoast during the peak months of hurricane season August and September.

But the season of storms for the Atlantic basin (Gulf of Mexico, Caribbean and Atlantic Ocean) goes from June 1st through November 30th. There have been storms which have had a huge impact on the Suncoast outside of these two peak months.

The old mariner's rhyme —  
June too soon  
July stand by  
August come it must  
September remember  
And October all over

doesn't hold true for SW Florida.



Late in the season in 1944 on Oct. 19th a strong cat. 3 storm was moving directly toward Sarasota from the Gulf. This storm lost some of its strength prior to making landfall near Venice but still caused considerable damage. The damage loss when compared to 1995 dollars stands at \$17 billion, according to Dr. Landsea who did a study on past hurricanes and what kind of dollar loss they would bring in modern times.

Now our coast is not as likely to be hit than, say, SE Florida or the western panhandle of Florida but as you can see, we do get hit occasionally. Despite what you may have heard about the Indian's blessing this coast and protecting us... that may not be the real reason we are spared from a majority of storms that get into the Gulf.

Using science and not some Indian folklore, our latitude and longitude are more important when it comes to getting fewer strikes than our neighbors along the other Gulf coast States.

Our longitude is important because we are on the West coast of Florida. The majority of storms develop in the Atlantic and move around the periphery of the Bermuda high. This tends to take the storms either out north to sea or slam them right into SE Florida or the Carolina's.

I always say we have a huge barrier island here along the Suncoast and it's called the East coast of Florida. Storms that make landfall on the East coast hit hard and then traverse across the state and hit with far less ferocity due to the loss of fuel or warm water as they move over the 200 miles or so of the Florida peninsula.

We saw this with Andrew in 1992, it hit Miami-Dade as a category 5 hurricane with winds in excess of 155 mph and moved across the state exiting Naples and Ft. Myers as a cat. 1 storm. That is a huge difference in terms of damage potential. Same can be said about Jeanne and Francis back in 2004 both making landfall on the East coast of Florida as major hurricanes and exiting the West coast as tropical storms.

As far as our latitude is concerned, we are in a good place. Typically, the storms that get into the Gulf generally move toward the North or toward the West or a combination of the two. They do eventually make a break toward the NE and then E but that usually happens once the storm gets North of our latitude. Now this isn't always the case as we saw with Charley in 2004, but it happens more frequently than storms moving east directly toward us.

The reason the storms usually start to move north after our latitude is that the steering currents become more west to east as you get higher up in latitude. Thus, once the storm gets closer to say the North Gulf coast states they tend to move to the NE or even E.

So, what does this all mean? It means get ready now before the storm threatens. Although we may not get hit as often as other coasts we still get hit here and it can be devastating. One only has to look at the destruction left behind from hurricane Charley in Charlotte County back in August, Friday the 13th.

All the experts are predicting an active season with more storms than usual but none of the prognosticators can tell us where they are going to develop and go. Remember it only takes one storm hitting our coast to make it an active one so get ready before the storm threatens.

Read though the guide, develop a plan and be prepared for whatever Mother nature throws at you this season.

The First Alert Storm team at ABC7 will be here before, during and after the storm hits making sure you, your family and pets can live to tell about it.

**Stay safe!**  
**Chief Meteorologist**  
**Bob Harrigan**



**Tampabayprepares.org**

[https://tinyurl.com/  
y95fd976](https://tinyurl.com/y95fd976)



**FloridaDisaster.org  
(Public Mapping)**

<http://goo.gl/Rp1Wwp>



**Build a Supply  
Kit**

<https://www.ready.gov/kit>



## **FIND YOUR EVACUATION ZONE**

### **Sarasota County Evacuation Levels**



### **Charlotte County Evacuation Levels**



### **Manatee County Evacuation Levels**



# Keeping You Informed On-Air



You can count on The Official Suncoast Storm Team whenever severe weather threatens. Bringing you the most comprehensive and accurate forecast on the Suncoast

**Comcast Cable**  
CH 7 & CH 431

**Spectrum Cable (Manatee)**  
CH 7 & CH 1007

**Frontier**  
CH 7 & CH 507

**DirectTV**  
CH 7 & CH 40

**Dish Network**  
CH 7

## Online

Go online for *The Official Suncoast Forecast* and updated weather information and alerts when severe weather approaches.

**MySuncoast.com**



In the event of a storm and you need to use your radio, we will be simulcasting on WSRQ.

## Mobile

[MySuncoast.com/mobileapps/](http://MySuncoast.com/mobileapps/)



Stay informed wherever you go! The **SuncoastWx** weather app brings you the latest weather updates no matter where you are.



### Weather & Short Wave Radio Programming

County	SAME	Transmitter(s)	Frequency MHz
Charlotte	012015	Fort Myers, Venice	162.475, 162.400
DeSoto	012027	Fort Myers, Venice	162.475, 162.400
Hardee	012049	Riverview, Venice, Sebring	162.550, 162.400, 162.500
Highlands	012055	Sebring	162.500
Manatee	012081	Riverview, Venice, Largo	162.550, 162.400, 162.450
Sarasota	012115	Venice	162.400





## Creating a Family Hurricane Readiness Plan

A hurricane on the way can be frightening for everyone, especially children and teenagers. Going over your emergency plan now can help ease some of their fears, and give everyone the confidence that he/she will know what to do in the event of a storm.

## Quick Tips

- Have a family meeting about the weather conditions. Explain why you'll need to stay safe at home or evacuate as the storm nears.
- Locate and agree on a safe room (or safe areas) in your home. Move pillows, flashlights, batteries, food and other hurricane supplies to that area.
- Gather necessary medicines, glasses/contact lenses, a first aid kit, and items for children such as baby formula and diapers. Keep them handy.
- Come up with an escape route from your house.
- Decide on a rendezvous point where everyone can meet in case you're separated during the storm.
- Write out contact information for family members. Include work and school, meeting locations and emergency services.
- Decide on a family contact who lives out of town or out of state, so all family members have a single point of contact in case of emergency. Make sure everyone knows this person and his/her phone number.
- The Department's Emergency Contact Information (ECI) program allows Floridians to securely register contact information online at <https://services.flhsmv.gov/eci/> and in driver license offices. DHSMV Executive Director Terry Rhodes says the information can only be accessed by law enforcement in times of emergency. There is no fee to register.
- Make sure a young child knows his/her name, address and home phone number.
- Post emergency phone numbers near your phone and explain when and how to call 911.
- Decide what to do with your pets if you need to evacuate. Make a plan for your pets - don't leave them behind.
- If there's a chance you'll evacuate, pack in advance, and allow children to pack one special item for comfort, such as a stuffed animal.



## Important Documents

Before a storm threatens, you should create a file with copies of all the documents you'll need after the storm. Be sure to keep this important information with you during a hurricane, especially if you're forced to evacuate. Personal identification (driver's license or photo identification card) and copies of the following:

- Birth certificate
- Marriage certificate
- Social Security cards
- Passports
- Wills
- Deeds
- Inventory of household goods
- Proof of Home and Car insurance policies
- Immunization records
- Bank and credit card account numbers
- Stocks and bonds
- Emergency contact list and phone numbers
- Map of the area and phone numbers of places you could go

**Source: FEMA**

Stay up to date with the latest forecasts and severe weather updates from The Official Suncoast Storm Team at ABC 7.



Follow us on Twitter  
[Twitter.com/MySuncoastWX](https://twitter.com/MySuncoastWX)



Like us on Facebook  
[Facebook.com/MySuncoast.com.ABC7](https://Facebook.com/MySuncoast.com.ABC7)





After an emergency, you may need to survive on your own for several days. Being prepared means having your own food, water and other supplies to last for at least 72 hours. A disaster supplies kit is a collection of basic items your household may need in the event of an emergency.

Make sure your emergency kit is stocked with the items on the checklist below. Most of the items are inexpensive and easy to find and any one of them could save your life. Headed to the store? Download a printable version to take with you. Once you take a look at the basic items consider what unique needs your family might have, such as supplies for pets or seniors.

### **Basic Disaster Supplies Kit**

To assemble your kit store items in airtight plastic bags and put your entire disaster supplies kit in one or two easy-to-carry containers such as plastic bins or a duffel bag.

### **A basic emergency supply kit could include the following recommended items:**

- **Water (one gallon per person per day for at least three days, for drinking and sanitation)**
- **Food (at least a three-day supply of non-perishable food)**
- **Battery-powered or hand crank radio and a NOAA Weather Radio with tone alert**
- **Flashlight**
- **First aid kit**
- **Extra batteries**
- **Whistle (to signal for help)**
- **Dust mask (to help filter contaminated air)**
- **Plastic sheeting and duct tape (to shelter in place)**
- **Moist towelettes, garbage bags and plastic ties (for personal sanitation)**
- **Wrench or pliers (to turn off utilities)**
- **Manual can opener (for food)**
- **Local maps**
- **Cell phone with chargers and a backup battery**
- **Download the Recommended Supplies List (PDF)**

### **Additional Emergency Supplies**

Since Spring of 2020, the CDC has recommended people include additional items in their kits to help prevent the spread of coronavirus or other viruses and the flu.

Consider adding the following items to your emergency supply kit based on your individual needs:

- **Cloth face coverings (for everyone ages 2 and above), soap, hand sanitizer, disinfecting wipes to disinfect surfaces**
- **Prescription medications**
- **Non-prescription medications such as pain relievers, anti-diarrhea medication, antacids or laxatives**
- **Prescription eyeglasses and contact lens solution**
- **Infant formula, bottles, diapers, wipes and diaper rash cream**
- **Pet food and extra water for your pet**
- **Cash or traveler's checks**
- **Important family documents such as copies of insurance policies, identification and bank account records saved electronically or in a waterproof, portable container**
- **Sleeping bag or warm blanket for each person**
- **Complete change of clothing appropriate for your climate and sturdy shoes**
- **Fire extinguisher**
- **Matches in a waterproof container**
- **Feminine supplies and personal hygiene items**
- **Mess kits, paper cups, plates, paper towels and plastic utensils**
- **Paper and pencil**
- **Books, games, puzzles or other activities for children**



## MAINTAINING YOUR KIT

After assembling your kit remember to maintain it so it's ready when needed:

- Keep canned food in a cool, dry place.
- Store boxed food in tightly closed plastic or metal containers.
- Replace expired items as needed.
- Re-think your needs every year and update your kit as your family's needs change

## KIT STORAGE LOCATIONS

Since you do not know where you will be when an emergency occurs, prepare supplies for home, work and cars.

**Home:** Keep this kit in a designated place and have it ready in case you have to leave your home quickly. Make sure all family members know where the kit is kept.

**Work:** Be prepared to shelter at work for at least <sup>24</sup> hours. Your work kit should include food, water and other necessities like medicines, as well as comfortable walking shoes, stored in a "grab and go" case.

**Car:** In case you are stranded, keep a kit of emergency supplies in your car.

# Making Your Home Storm Ready



## Long before hurricane season begins, there are things you should do to get your home ready for the storm season

- Keep your trees trimmed, removing all overgrowth and dead branches.
- Make or buy shutters for all your doors and windows NOW, not in the days before a hurricane threatens the Suncoast.
- Impact-resistant windows and manufactured shutters are the preferred ways to protect your home.
- If pre-made shutters aren't an option, use plywood that's at least 3/4 of an inch thick.
- If you own a concrete block home, install anchoring devices for the roof.
- Don't forget about your garage door. This can be the most vulnerable area of your home when a hurricane hits. If possible, work with a professional garage door installer to retrofit your door to meet current hurricane codes. Most home supply stores sell garage door bracing kits.
- Buy plastic tarps that you can use after the storm if you have roof damage.
- Stock up on batteries for radios, flashlights and portable lights.
- Keep in mind, many stores will sell out of the materials you need to protect your home when the area is under a hurricane watch or warning. Everything you can do BEFORE the storm will give you more time to get ready and more peace of mind.
- Have flashlights and battery powered lights ready.
- Make sure the storm has passed before you go outside and it's not the eye of the hurricane.
- Remember that many injuries happen AFTER the storm during the clean up process.

## Here's what you need to know to protect your home in the few days or hours before a hurricane strikes

- Pick up everything around your home that could become airborne and bring it inside. That includes all outdoor furniture, potted plants, yard tools, garbage cans, etc.
- Clear your home's gutters to handle the heavy rain.
- Protect your insurance and other important documents in sealable, plastic bags.
- Charge your cell phone batteries.
- Fill up your car with gas and portable gas cans if you own a generator.

## What you need to do if you plan to stay at your home through the storm

- Stock up on water, non-perishable food, prescriptions, first aid kit, and cash. Basically anything and everything you'll need to survive in the days after the storm when electricity will be out and finding supplies will be a challenge.
- Choose an interior room in your home that can serve as your safe room.
- Have a battery powered radio.
- Have flashlights and battery powered lights ready.
- Make sure the storm has passed before you go outside and it's not the eye of the hurricane.
- Remember that many injuries happen AFTER the storm during the clean up process.

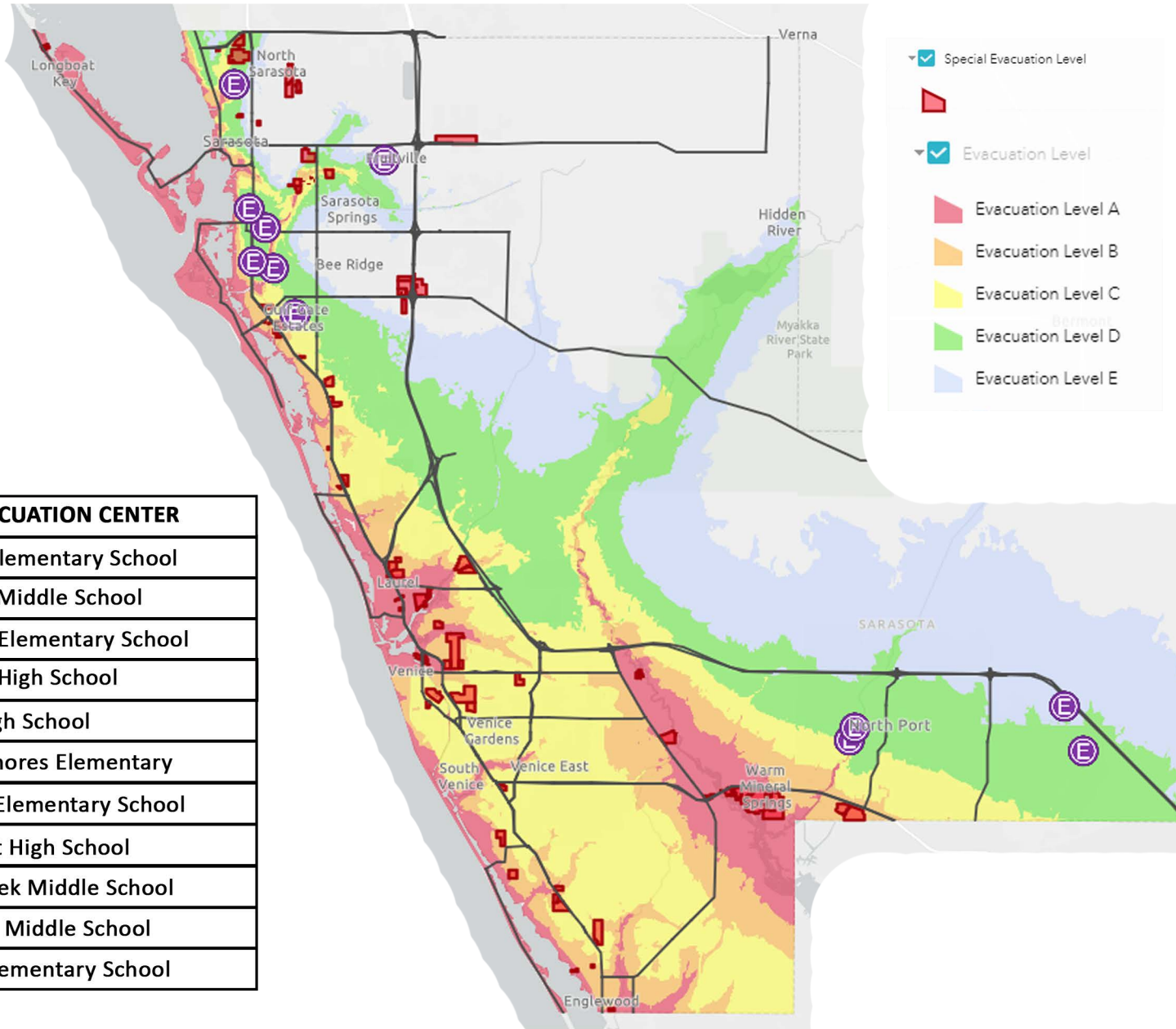
## The Bottom Line

- After the storm can be the most stressful part of a hurricane.
- Be safe, be patient and help your neighbors.
- When a hurricane threatens, hope for the best and prepare for the worst!

**Sources: National Hurricane Center, Federal Alliance For Safe Homes**



## Sarasota County Hurricane Center & Evacuation Information



EVACUATION CENTER
Fruitville Elementary School
Brookside Middle School
Southside Elementary School
Riverview High School
Booker High School
Phillippi Shores Elementary
Gulf Gate Elementary School
North Port High School
Heron Creek Middle School
Woodland Middle School
Atwater Elementary School

SCGov.net  
(Emergency Svc's)



[shorturl.at/chilV](http://shorturl.at/chilV)

SCGov.net  
(Know your level)



[shorturl.at/mHLMS](http://shorturl.at/mHLMS)



The information within this guide should be used as reference only and is subject to change without notice. Always check with local Emergency Management Services, tune to ABC 7 and visit MySuncoast.com for updated information during severe weather events.

## Manatee County Shelter & Evacuation Information

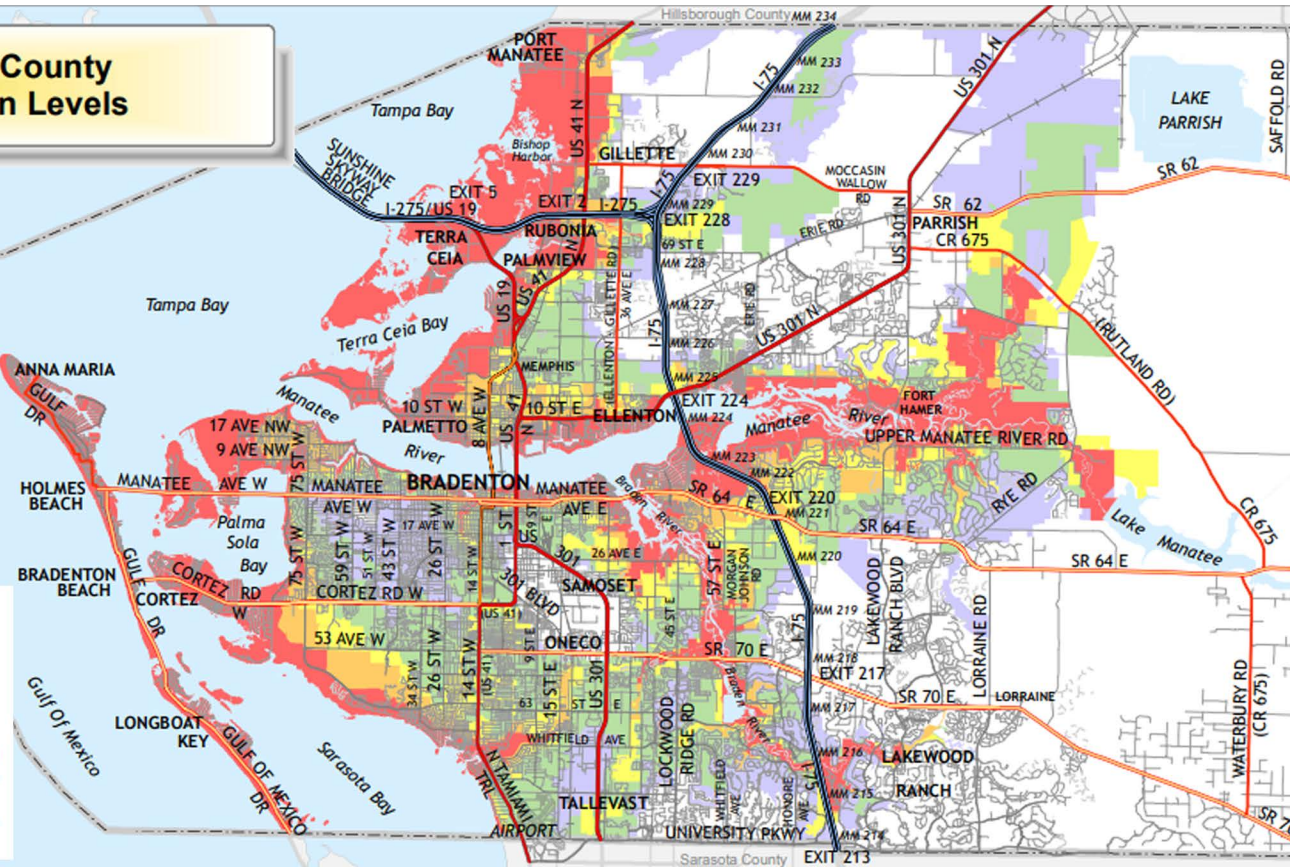
### Manatee County Evacuation Levels



**Evacuation Levels**

- Level A
- Level B
- Level C
- Level D
- Level E

+ Railroad  
 ✈ Airports  
 Interstate  
 U.S. Highway  
 State Road  
 County Road  
 Business Road  
 Local Roads - Built  
 Under Construction  
 Built  
 Under Construction  
 Proposed



NO.	SHELTER NAME	ADDRESS
18	BAYSHORE ELEMENTARY SCHOOL	6120 26TH STREET WEST, BRADENTON
19	BRADEN RIVER HIGH SCHOOL	6545 SR 70 EAST, BRADENTON
13	BRADEN RIVER MIDDLE SCHOOL	6215 RIVER CLUB BLVD., BRADENTON
24	BUFFALO CREEK MIDDLE SCHOOL	7320 69TH STREET EAST, PALMETTO
28	DAUGHTREY ELEMENTARY SCHOOL	545 83RD AVE. EAST, BRADENTON
2	FREEDOM ELEMENTARY SCHOOL	9555 STATE ROAD 64 EAST, BRADENTON
25	GULLETT ELEMENTARY SCHOOL	12125 42TH AVE. EAST, BRADENTON
11	HAILLE MIDDLE SCHOOL	3305 STATE ROAD 64 EAST, BRADENTON
3	HARVEY ELEMENTARY SCHOOL	8610 115TH AVE. EAST, PARRISH
15	JOHNSON-WAKELAND SCHOOL OF IB	2121 26TH AVE. EAST, BRADENTON

17	KINNAN ELEMENTARY SCHOOL	3415 TALLEVAST ROAD, SARASOTA
4	LEE MIDDLE SCHOOL	4000 53RD AVENUE WEST, BRADENTON
6	MANATEE HIGH SCHOOL	902 32RD STREET COURT WEST, BRADENTON
5	MCNEAL ELEMENTARY SCHOOL	6325 LORRAINE ROAD, BRADENTON
26	MILLER ELEMENTARY SCHOOL	601 43RD STREET WEST, BRADENTON
20	MILLS ELEMENTARY SCHOOL	7200 69TH STREET EAST, PALMETTO
7	MYAKKA CITY ELEMENTARY SCHOOL	37205 MANATEE AVE., MYAKKA CITY
14	ONECO ELEMENTARY SCHOOL	5214 22ND STREET COURT EAST, BRADENTON
22	PRINE ELEMENTARY SCHOOL	3801 SOUTHERN PARKWAY, BRADENTON
9	RODGERS GARDEN ELEMENTARY SCHOOL	515 13TH AVE WEST, BRADENTON

1	SEABREEZE ELEMENTARY SCHOOL	3601 74ST STREET WEST, BRADENTON
8	TILLMAN ELEMENTARY SCHOOL	1415 29TH STREET EAST, PALMETTO
27	WILLIAMS ELEMENTARY SCHOOL	3404 FORT HAMER ROAD, PARRISH
23	WILLIS ELEMENTARY SCHOOL	14705 THE MASTERS AVENUE, BRADENTON
12	WITT ELEMENTARY SCHOOL	200 RIVE ROAD, BRADENTON

MyManatee.org  
(Emergency Management)  
<http://goo.gl/GpCuNh>

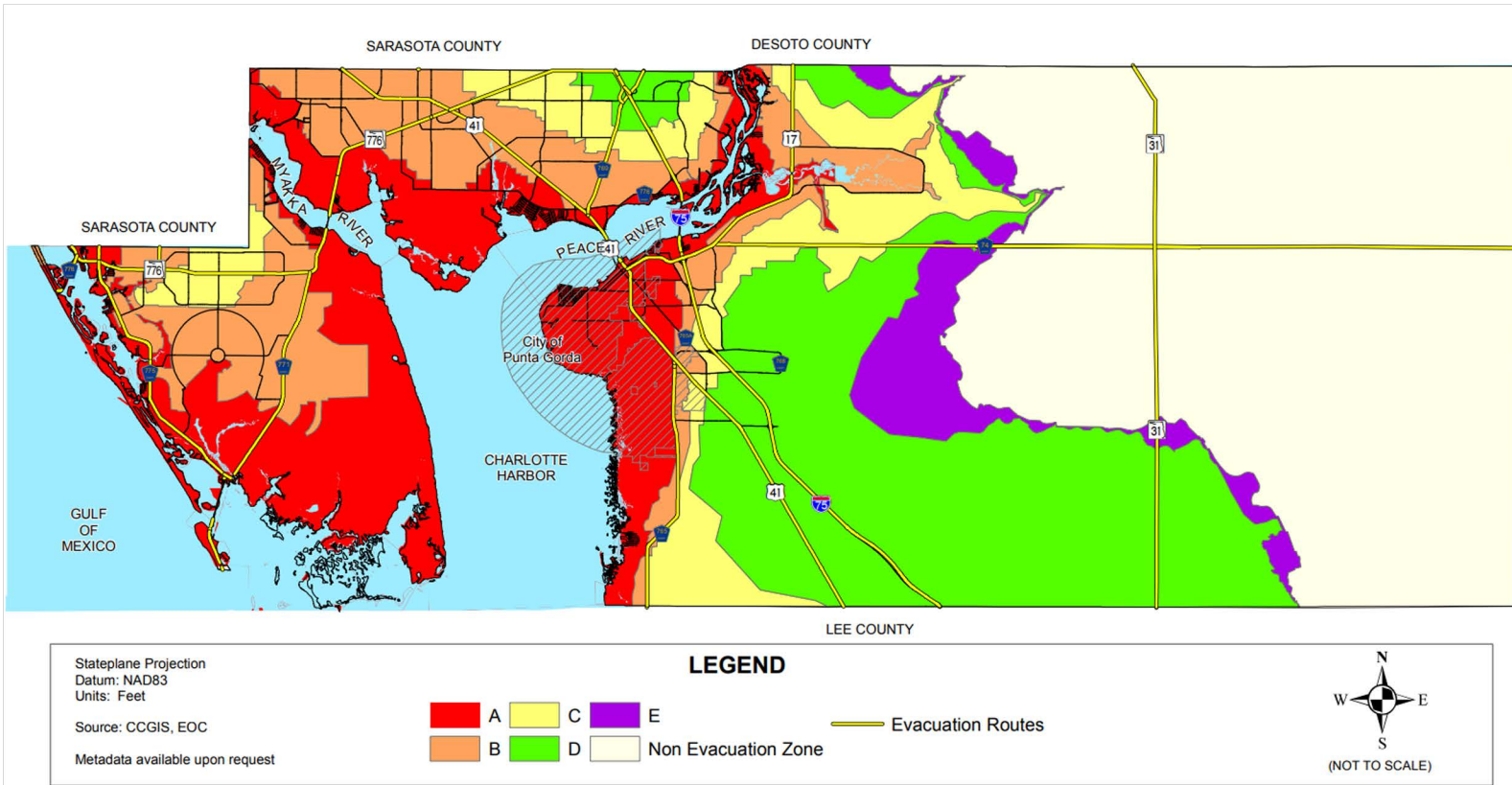
MyManatee.org  
(Know Your Evac. Zone)  
<http://goo.gl/r3vq3B>

FloridaDisaster.org  
(Public Mapping)  
<http://goo.gl/Rp1Wwp>



The information within this guide should be used as reference only and is subject to change without notice. Always check with local Emergency Management Services, tune to ABC 7 and visit MySuncoast.com for updated information during severe weather events.

## Charlotte County Shelter & Evacuation Information



Charlotte Harbor School	22450 Hancock Ave, Port Charlotte
Cultural Center of Charlotte Co.	2280 Aaron St., Port Charlotte
Kingsway Elementary School	23300 Quasar Blvd., Port Charlotte
L.A. Ainger Middle School	245 Cougar Way, Rotonda West
Lemon Bay High School	2201 Placida Rd, Englewood
Liberty Elementary School	370 Atwater Street, Port Charlotte
Meadow Park Elementary School	3131 Lakeview Blvd. NW, Port Charlotte

Murdock Middle School	17325 Mariner Way, Port Charlotte
Myakka River Elementary School	12650 Wilmington Blvd, Englewood
Port Charlotte High School	18200 Cochran Blvd, Port Charlotte
Port Charlotte Middle School	23000 Midway Blvd, Port Charlotte
Sallie Jones Elementary School	1230 Narranja St., Punta Gorda
South County Regional Park	670 Cooper Street, Punta Gorda
Vineland Elementary School	467 Boundary Blvd, Englewood

### NOTE

Only Kingsway Elementary School is a Red Cross Shelter. The remaining facilities will be opened as county-run shelters. Do not depend on a particular Refuge Site being open. Refuge Sites may or may not be opened depending on the size of the storm and the predicted landfall area. Charlotte County has no Refuge Sites if we have a Category 3 or higher storm affecting the area.

CharlotteCountyFL.com  
(Emergency Management)  
<http://goo.gl/RqvxBB>

CharlotteCountyFL.com  
(Know Your Evac. Zone)  
<http://goo.gl/275nRE>

FloridaDisaster.org  
(Public Mapping)  
<http://goo.gl/Rp1Wwp>



## Other Suncoast Shelter & Evacuation Locations

### Hardee County Shelter Information

Zolfo Springs Elementary School	3215 Schoolhouse Rd., Zolfo Springs	(863) 735-1221
Bowling Green Elementary School	4530 Church Ave., Bowling Green	(863) 375-2288
Hilltop Elementary School	2401 US Highway 17 N., Wauchula	(863) 773-2750
North Wauchula Elementary School	1120 North Florida Ave., Wauchula	(863) 773-2183
South Florida Community College	2968 US Highway 17 N. Bowling Green	SPECIAL NEEDS ONLY 863-773-3081

**HardeeCounty.net**  
(Shelter Information)  
<http://goo.gl/Aod9k5>



### Desoto County Shelter Information

Desoto County Middle School	420 East Gibson Street, Arcadia	(863) 993-4831
South Florida Community College	2251 NE Turner Avenue, Arcadia	Special Needs Shelter (Must be pre-registered)

**DesotoBOCC.com**  
(Emergency Management)  
<http://goo.gl/Dh51Cg>



### Information About Special Needs Shelters

Each county handles special needs shelters in different ways. Almost all of them require that you register in advance. For your own protection and peace of mind, register now before a storm threatens. You can download the applications online or call the county where you live.

Manatee County	<a href="http://www.mymanatee.org">www.mymanatee.org</a>	941-749-3500
Sarasota County	<a href="http://www.scgov.net">www.scgov.net</a>	941-861-5000
Charlotte County	<a href="http://www.charlottecountyfl.com">www.charlottecountyfl.com</a>	941-833-4000
Hardee County	<a href="http://www.hardeecounty.net">www.hardeecounty.net</a>	863-773-6373

### Sarasota Transportation - New Service

Sarasota County is now offering transportation for people who do not have means of transportation and cannot drive themselves to a Hurricane Center. The program will take residents, their pet, and a limited number of supplies to a center. There are 17 rally points. They can be found at the website below. People can sign up for the service here:

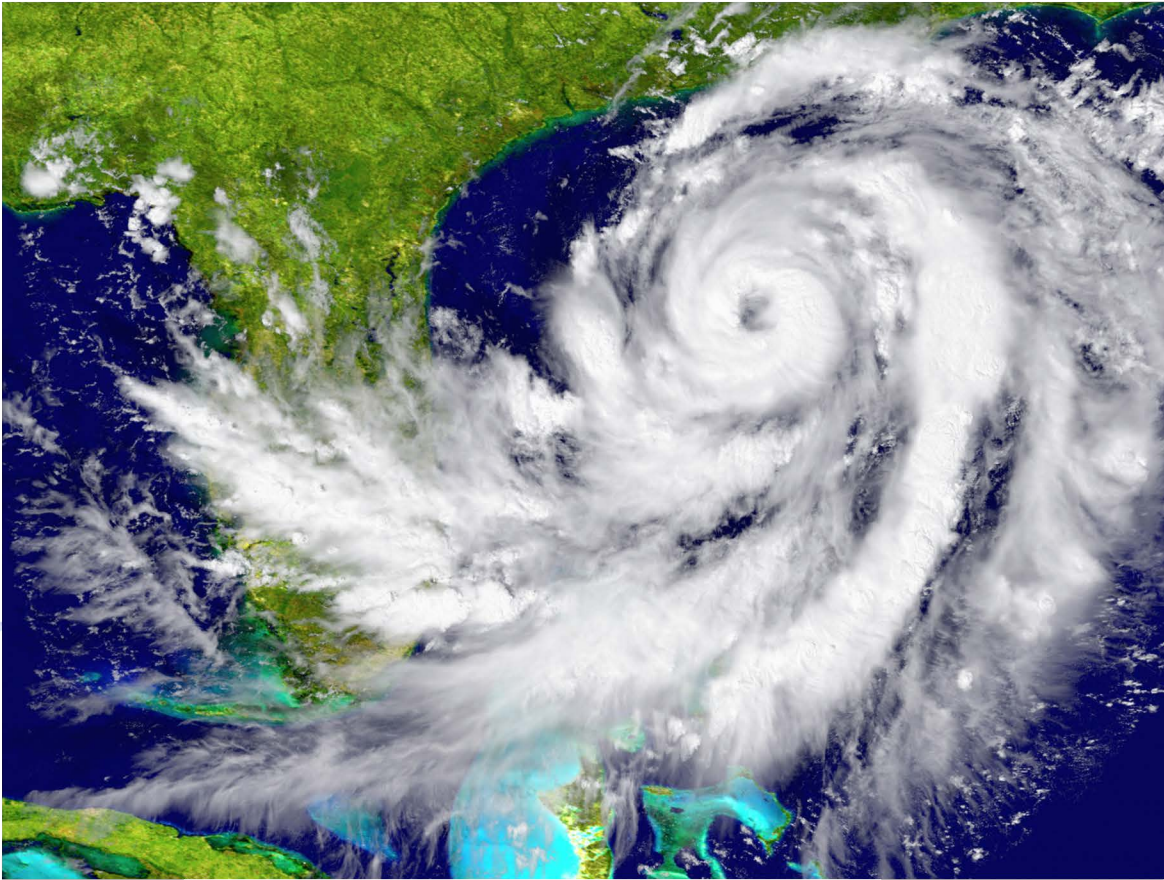
<https://www.scgov.net/government/emergency-services/emergency-management/transportation-plan-hurricane-evacuation-centers>

# Send us your photos!

[Pix@mysuncoast.com](mailto:Pix@mysuncoast.com)



# 2020 Hurricane Names



Arthur  
Bertha  
Cristobal  
Dolly  
Edouard  
Fay  
Gonzalo  
Hanna  
Isaias  
Josephine  
Kyle  
Laura  
Marco  
Nana  
Omar  
Paulette  
Rene  
Sally  
Teddy  
Vicky  
Wilfred

## Saffir-Simpson Hurricane Scale by category

5 <i>Catastrophic Damage</i>	4 <i>Catastrophic Damage</i>	3 <i>Devastating</i>	2 <i>Extremely Dangerous</i>	1 <i>Very Dangerous</i>
157 or higher wind	130-156 mph wind	111-129 mph wind	96-110 mph wind	74-95 mph wind
The potential for complete building and roof damage/failure. Some small buildings could be blown over entirely. Massive evacuation of residential areas on low ground within 5 to 10 miles of the shoreline may be required.	Some roofing material, door and window damage to buildings. Considerable damage to vegetation, mobile homes and piers. Coastal and low-lying escape routes flood 2-4 hours before arrival of center.	Some structural damage to small residences and utility buildings. Mobile homes are destroyed. Flooding near the coast destroys smaller structures. Flooding can occur inland 8 miles or more. Power out for several days.	More extensive structural damage, and the potential for roof failure on small residences. Major erosion of beach. Severe flooding may require massive evacuation of residential areas inland as far as 8 miles.	The potential for complete building and roof damage/failure. Some small buildings could be blown over entirely. Massive evacuation of residential areas on low ground within 5 to 10 miles of the shoreline may be required.



The information within this guide should be used as reference only and is subject to change without notice. Always check with local Emergency Management Services, tune to ABC 7 and visit MySuncoast.com for updated information during severe weather events.

## What To Bring To A Shelter

Now, before a hurricane threatens, is the time to pack your bag to take with you to the shelter. Keep in mind that there are no beds, few chairs, and no entertainment at shelters and you may spend a few hours or several days cooped up there. There is very little privacy at the shelters. You'll spend your time in a big room in close proximity to a lot of other people. Volunteers at the shelters supply food and a safe, dry place out of the storm. It's up to you to bring the rest.



### Here's what to bring to the shelter

- Medication
- Sleeping bag, inflatable mattress, pillow, and a blanket to keep warm
- Something to sit on, like a folding chair
- Books, games, radio, cell phone, toys for kids
- Batteries for all battery operated items
- Wash cloth, towels and a few changes of clothes
- Toothbrush and toothpaste
- Snacks
- Flash lights

And be sure to let friends and family, especially those out of town, know what shelter you're going to so they can find you after the storm passes.

## Boat Safety Tips

Whether you store your boat in your backyard or have it docked on the water, there are some simple things you should do before a hurricane hits:



- Remove small boats from the water and move them to a secure location; the more inland the better.
- Be sure your trailer and boat are secured above the areas likely to flood.
- Remove all loose items on board.
- Tie the boat securely to the trailer or tie it to trees. It doesn't hurt to throw out the anchor.
- Let some air out of the trailer tires and block the wheels.
- You can increase the weight of lighter outboard boats by leaving the drain plug in and using a garden hose to add water. This has the added advantage of giving you emergency.
- Gather water (non-drinking) if the hurricane knocks out the main water supply.
- Place wood blocks between the trailer's frame and axle to support the added weight.
- In some cases you may want to plug the engine's exhaust outlet.
- If possible, boats on storage racks should be placed on trailers and taken home.
- If your boat is too large to take out of the water, move it to a safe haven well before the storm approaches. You should know where safe havens are in the area where you boat.
- Double up and secure mooring lines.
- By the time preparations are completed, your boat should resemble a spider suspended in the center of a large web.
- Secure all hatches and portals and cover windscreens.
- Take down mast whenever possible.
- It's best to not leave your boat on a davit. If you must, be sure to remove the drain plug to avoid excess water weight. A study by MIT after hurricane Gloria found that boats stored ashore were more likely to be saved than boats that were kept in the water. Members of the Boat U.S. Catastrophe team estimated that as many as 50% of the boats damaged during Hurricane Fran could have been saved by using better dock lines.

**Sources: US Coast Guard & BoatUS.com**

# What To Do With Pets?



In order to bring your pet to a pet friendly shelter you will need to provide proof of an updated license, vaccinations and have your pet in a pet carrier. Pet friendly shelters are usually limited to dogs and cats only.

**As pet owners**, we have several responsible choices when a hurricane threatens:

1. Keep them with us at home.
2. Take them with us to a pet-friendly motel or public shelter.
3. Board them in a hurricane safe kennel.
4. Take them on a road trip to an out of town friend or family's home.

If you decide to stay, designate a safe room where pets can go. Preferably one with solid walls and without windows. You'll need a preparedness kit for each pet.

## FEMA's Recommendation For Pet Preparedness

(in addition to proof of updated vaccinations)

- A leash with collar and ID
- An animal crate
- Two week supply of food, water and any medications.
- Towels to dry them off after a walk in the rain.
- If you have a cat, be sure to bring kitty litter and an appropriate container.
- Check around NOW for kennels that are hurricane safe (located inland, away from storm surge, with an independent power source). It might be smart to register with them ahead of time providing the latest vaccination and medical information.
- During the early signs of an approaching storm, make your reservations early because the kennels will fill up fast. The same goes for finding motels that are pet-friendly.

### Sarasota Pet Friendly Shelters

[www.scgov.net](http://www.scgov.net)

Heron Creek Middle School	6501 W Price Blvd., North Port
Brookside Middle School	3636 S Shade Ave., Sarasota
Atwater Elementary	501 Old Venice Rd., Osprey
North Port High School	6400 W. Price Blvd., North Port
Woodland Middle School	2700 Panacea Blvd., North Port
Riverview High School	1 Ram Way, Sarasota
Booker High	3201 N Orange Ave., Sarasota
Booker Middle	2250 Myrtle St., Sarasota
Southside Elem	1901 Webber St., Sarasota
Phillippi Shores Elem	4747 S Tamiami Trl., Sarasota
Gulf Gate Elementary	4701 Huntsville Ace., North Port

### Manatee Pet Friendly Shelters

[www.mymanatee.org](http://www.mymanatee.org)

Braden River High School	6545 State Road 70 E., Bradenton
Manatee High School	1000 32nd St. W., Bradenton
Mills Elementary School	7200 69th St. E., Palmetto

### Charlotte Pet Friendly Shelters

[www.charlottecountyfl.com](http://www.charlottecountyfl.com)

Port Charlotte Middle School	23000 Midway Blvd., Port Charlotte
------------------------------	------------------------------------

### Hardee Pet Friendly Shelters

[www.hardeecounty.com](http://www.hardeecounty.com)

Pet Friendly Shelter	404 West Orange St., Wauchula
----------------------	-------------------------------

The information within this guide should be used as reference only and is subject to change without notice. Always check with local Emergency Management Services, tune to ABC 7 and visit MySuncoast.com for updated information during severe weather events.



# What To Do After The Storm

**Emergency information will be forthcoming;** follow the directions of local officials. If you have evacuated, do not return home until you have been notified that the neighborhood is safe.

- **Have I.D. with you at all times.**
- Your family's health and safety is a primary concern. Drink plenty of clean water to avoid dehydration. To purify water, boil it for ten minutes or add 8 drops of bleach per gallon of clear water. Discard food that has been in contact with floodwaters.
- Wash hands frequently as floodwaters may contain contaminants.
- Apply first aid to any cuts and seek professional assistance for the injured.
- Use the telephone only for emergencies and to call your insurance agent.
- Mark your address on your home so that it is clearly visible from the street. Also mark the name of your insurance company.
- Do not go sightseeing, particularly at night.
- Make temporary repairs to your roof with tarpaulins as soon as possible to limit further water damage to the inside of your home.
- Document all damage with a camera.
- Beware of hazards such as gas leaks, downed power lines, stray animals, damaged home wiring, broken glass, chemical spills and weakened trees.
- Wear sturdy shoes and use gloves for clean ups.
- Do not use candles for light. Battery powered lanterns and flashlights are best.
- Follow generator instruction manuals for the safety procedures.
- Check the credentials of anyone hired to assist in repairs to your home. Get estimates and guarantees in writing and be sure the contractor is licensed and insured.
- Understand that disaster can cause an emotional toll on family members. Accept assistance from faith-based organizations, voluntary agencies or professional counselors for anyone showing signs of profound sadness, grief or anger.





# Important Telephone Numbers

## EMERGENCY MANAGEMENT

Sarasota County	941-861-5000	scgov.net
Manatee County	941-749-3500	mymanatee.org
Charlotte County	941-833-4000	charlottecountyfl.com
DeSoto County	863-993-4831	www.co.desoto.fl.us
Hardee County	863-773-6373	hardeecounty.net

## SARASOTA COUNTY

Sheriff	941-861-5800
Animal Services	941-861-9500
Highway Patrol	941-483-5911
American Red Cross	941-379-9300
Special Needs	941-861-5000
FPL	1-800-468-8243
Solid Waste	941-861-5000
Friendship Volunteer Center	941-953-5965

## MANATEE COUNTY

Sheriff	941-747-3011
Animal Services	941-742-5933
Highway Patrol	941-751-7647
American Red Cross	941-792-8686
Peace River Electric	1-800-282-3824
FPL	1-800-468-8243
Solid Waste	941-792-8811
Citizens Action Ctr.	941-742-3500
Special Needs	941-749-3500, ext. 7828

## CHARLOTTE COUNTY

Sheriff	941-639-2101
Animal Services	941-833-5690
Highway Patrol	239-278-7100
American Red Cross	941-629-4345
Emergency Management	941-833-4000

## HARDEE COUNTY

Sheriff	863-773-0304
Animal Services	863-773-2320
American Red Cross	863-773-9097
Utilities	863-773-3465
Fire Rescue	863-773-4362
Peace River Electric	1-800-282-3824
Progress Energy	1-800-228-8485
Special Needs	863-773-6373

## DESOTO COUNTY

Sheriff	863-993-4700
Animal Services	863-993-4855
American Red Cross	863-494-2348
Highway Patrol	239-938-1800
FPL	1-800-468-8243
Peace River Electric	1-800-282-3824

## STATE OF FLORIDA

FEMA	1-800-621-3362
FEMA-Hearing Impaired TDD	1-800-427-5593
American Red Cross Helpline	1-800-733-2767
Salvation Army Emergency Needs	1-800-725-2769
FL Hurricane Financial Help Line	1-800-488-4406
State of FL Emergency Information Attorney General	1-800-342-3557 myfloridalegal.com
Price Gouging Hotline/Consumer Services	1-800-435-7352 (1-800-HelpFLA)
Dept. of Labor & Employment	1-800-342-1741
State Volunteer and Donations	1-800-354-3571
Elder Affairs	1-800-963-5337

## MAJOR INSURANCE COMPANIES

State Farm Insurance	1-800-732-5246
Allstate Floridian Insurance	1-800-547-8676
Nationwide Insurance	1-800-421-3535
USAA	1-800-531-8222
Citizens Property Insurance	1-866-411-2742
Travelers of Florida	1-800-252-4633
Progressive	1-800-776-4737
Mercury	1-800-987-6000
National Flood Insurance Program	1-800-427-4661



# Be Prepared This Hurricane Season



Hurricane season can be a stressful time for Floridians. It's a good idea to stock up now on essential preparedness products before disaster strikes suddenly or you need to evacuate. Batteries Plus Bulbs has a nationwide disaster planning program in place for its stores, ensuring that consumers are able to stock up on preparedness items without fear of their local store running out of products.

Batteries Plus Bulbs has store locations in Bradenton, Ellenton, Sarasota, Port Charlotte and Venice. Visit [www.batteriesplus.com](http://www.batteriesplus.com) to find the store nearest you and get expertise about more essential hurricane preparedness products.

Here are recommend products homeowners and businesses should keep on hand:

- **Power Inverters** – Power inverters will allow you to use a car's battery to run a variety of electronic devices and appliances if you're without electricity.
- **Flashlights** – As a general rule of thumb, consumers should have one flashlight per person in their household.
- **Alkaline Batteries** – Stock up on two to three sets of backup batteries, including AA, AAA, C, D and 9 volt, for every device that requires a charge including flashlights, lanterns, and smoke, fire and carbon monoxide detectors.
- **Battery-Operated Candles** – Battery powered candles are a safe option to provide lighting in the home.
- **UPS Battery Backup** - Keep equipment powered and avoid losing data or damaging your electrical equipment during a power surge or unexpected shutdown.
- **Backup Chargers for Mobile Devices** – A protective case with an external battery pack can help keep a smartphone powered up longer than its normal battery life. Car chargers are crucial for keeping communication lines open when the electricity is out.

**FIRST ALERT  
WEATHER**